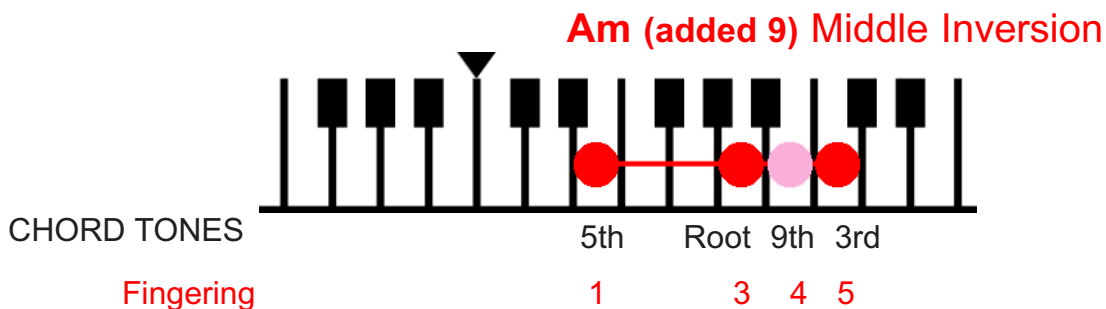
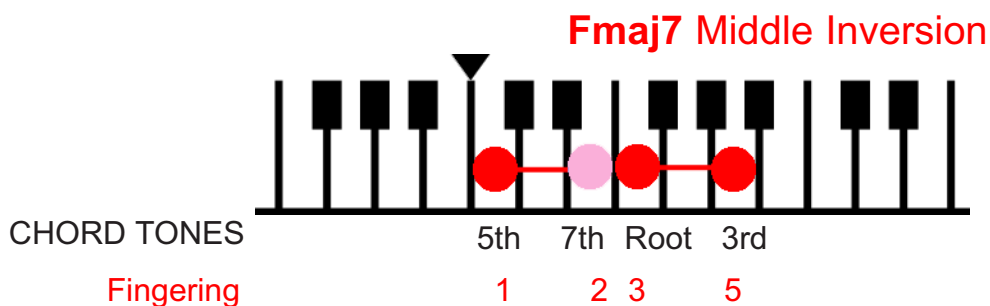
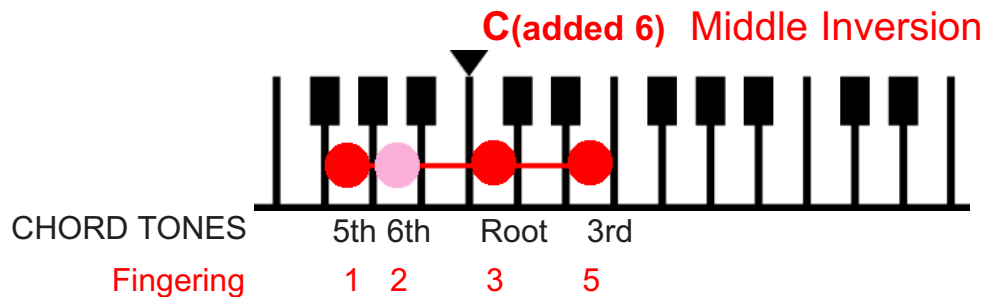


## RIGHT HAND **CLUSTER** CHORDS

A **CLUSTER** chord is a chord in which two (or three) of the notes in the chord are **CLUSTERED** together.

Up to now you have played evenly spaced three note chords. If you **ADD** in an extra note **INTO** the chord you can make some very interesting sounds.

Try the following examples - **ALL RIGHT HAND**



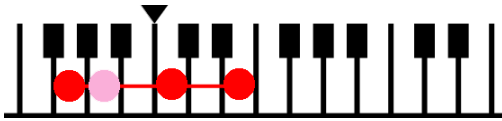
Can you hear the **TENSION** within the chord?

Now try the 2 bar song intro's on the next two pages

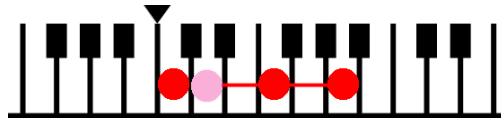
# RIGHT HAND CLUSTER CHORDS

In the style of **FOOL ON THE HILL** - The Beatles

**C6** Middle Inversion



**F6** Middle Inversion



Rhythm - Oom Pah

**C6**

**F6**

Musical notation for the right hand of 'Fool on the Hill'. The treble clef is in common time (C). The first measure contains four C6 chords (E2, F2, G2, A2) in a descending sequence. The second measure contains four F6 chords (A2, B2, C3, D3) in a descending sequence. The bass line consists of a single note per measure: C2 in the first measure and F2 in the second measure.

C G F C

In the style of **ALONE AGAIN NATURALLY** - Gilbert O'Sullivan  
and **EVERYBODY'S TALKIN' AT ME** - Harry Nilsson

**Fmaj7** Middle Inv



**F6** Middle Inversion



Rhythm - BOSSA NOVA BOUNCE

**Fmaj7**

**F6**

Musical notation for the right hand of 'Bossa Nova Bounce'. The treble clef is in common time (C). The first measure contains four Fmaj7 chords (A2, B2, C3, D3) in a descending sequence. The second measure contains four F6 chords (A2, B2, C3, D3) in a descending sequence. The bass line consists of a single note per measure: F2 in the first measure and C2 in the second measure.

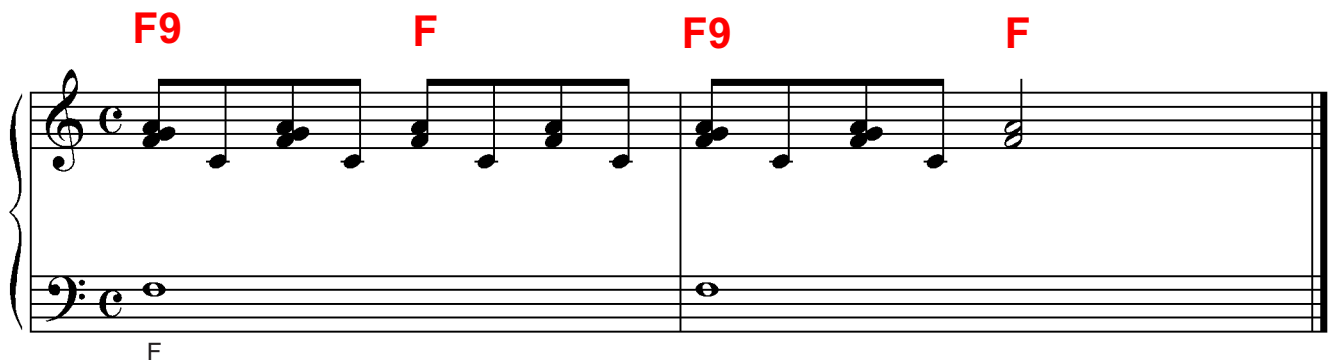
F

# RIGHT HAND CLUSTER CHORDS

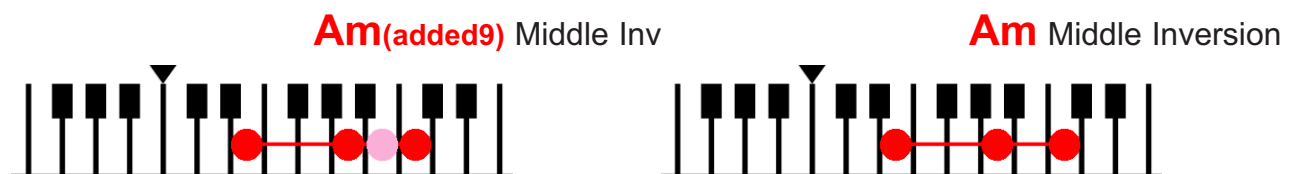
In the style of **WITHOUT YOU** - Harry Nilsson



Rhythm - SPLIT CHORD



In the style of **IT MUST BE LOVE** - Labi Siffri / Madness



Rhythm - NEW - Follow the notation & recording

